

SPLIT E1000 CARTRIDGE ASSEMBLY

with Timken® Enhanced Tapered Roller Bearings

TYPE E

SHAFT SIZE	MOLINE PART #	DIMENSIONS (INCHES)						WEIGHT LBS.
		A	B	C	E	K	L	
1 3/16 1 1/4	19373103 19373104	2.75	1.88	0.56	2.51	2.6370	2 1/4	3.0 3.0
1 3/8 1 7/16 35mm	19373106 19373107 19373035	3.00	2.06	0.62	3.03	3.2000	2 1/2	4.0 4.0 4.0
1 1/2 1 5/8 1 11/16 40mm	19373108 19373110 19373111 19373040	3.38	2.31	0.75	3.49	3.6920	2 7/8	4.0 6.0 6.0 6.0
1 3/4 1 7/8 1 15/16 2 45mm 50mm	19373112 19373114 19373115 19373200 19373045 19373050	3.50	2.44	0.82	3.75	3.9650	3 1/8	6.0 6.0 7.0 7.0 7.0 7.0
2 3/16 55mm	19373203 19373055	3.75	2.56	0.84	4.22	4.4380	3 5/8	9.0 9.0
2 1/4 2 7/16 2 1/2 60mm 65mm	19373204 19373207 19373208 19373060 19373065	4.00	2.55	0.85	4.56	4.7810	4	11.0 11.0 11.0 11.0 11.0
2 11/16 2 3/4 2 15/16 3 70mm 75mm	19373211 19373212 19373215 19373300 19373070 19373075	4.50	3.00	0.98	5.17	5.4325	4 5/8	16.0 16.0 16.0 16.0 16.0 16.0
3 3/16 3 1/4 3 7/16 3 1/2 80mm 85mm 90mm	19373303 19373304 19373307 19373308 19373080 19373085 19373090	5.00	3.50	1.125	6.30	6.5940	5 5/16	30.0 30.0 30.0 30.0 30.0 30.0 30.0



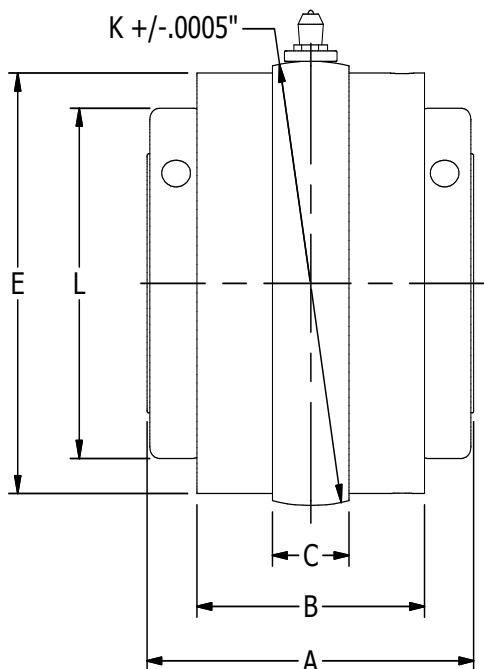
SPLIT E1000 CARTRIDGE ASSEMBLY

with Timken® Enhanced Tapered Roller Bearings

SHAFT SIZE	MOLINE PART #	DIMENSIONS (INCHES)						WEIGHT LBS.
		A	B	C	E	K	L	
3 15/16	19373315	6.25	4.50	1.56	6.84	7.2640	5 3/4	42.0
4	19373400							42.0
100mm	19373100							42.0
4 7/16	19373407	6.75	4.63	1.63	7.56	8.0000	6 1/4	56.0
4 1/2	19373408							56.0
110mm	19373110M							56.0
115mm	19373115M							56.0
4 15/16	19373415	7.25	5.13	1.87	8.79	9.2900	7 1/4	81.0
5	19373500							81.0
125mm	19373125							81.0

TYPE E

Split E1000 Cartridge Assembly includes Timken Cups/Cone (extended sleeve) with drive collars, set screws, shim assortment, grease fitting and cartridge stop.



For personal service 800.242.4633
 CAD drawings at no additional charge
 For nomenclature see pages 240 and 241

MOLINE BEARING CO

