

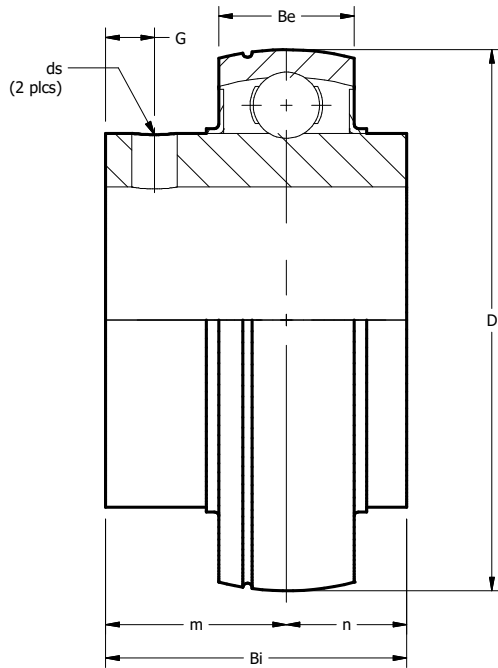
NORMAL DUTY UC 200 SERIES INSERT

SHAFT SIZE	MOLINE PART #	UNIT #	DIMENSIONS (INCHES)							WEIGHT LBS.
			D	Bi	Be	n	m	G	ds	
1/2	15400008	UC 201-08								.45
5/8	15400010	UC 202-10	1.8504	1.221	.630	.500	.721	.185	1/4-28	.40
3/4	15400012	UC 204-12								.35
7/8	15400014	UC 205-14								.50
15/16	15400015	UC 205-15	2.0472	1.339	.669	.563	.776	.217	1/4-28	.45
1	15400100	UC 205-16								.40
1 1/8	15400102	UC 206-18								.75
1 3/16	15400103	UC 206-19	2.4409	1.500	.748	.626	.874	.217	1/4-28	.70
1 1/4	15400104-06	UC 206-20								.65
1 1/4	15400104	UC 207-20								1.15
1 5/16	15400105	UC 207-21	2.8346	1.689	.787	.689	1.000	.228	5/16-24	1.10
1 3/8	15400106	UC 207-22								1.00
1 7/16	15400107	UC 207-23								.95
1 1/2	15400108	UC 208-24	3.1496	1.937	.827	.748	1.189	.315	5/16-24	1.45
1 9/16	15400109	UC 208-25								1.40
1 5/8	15400110	UC 209-26								1.70
1 11/16	15400111	UC 209-27	3.3465	1.937	.866	.748	1.189	.315	5/16-24	1.60
1 3/4	15400112	UC 209-28								1.50
1 7/8	15400114	UC 210-30								1.85
1 15/16	15400115	UC 210-31	3.5433	2.032	.906	.748	1.284	.354	3/8-24	1.75
2	15400200-10	UC 210-32								1.60
2	15400200	UC 211-32								2.60
2 1/8	15400202	UC 211-34	3.9370	2.189	.984	.874	1.315	.354	3/8-24	2.45
2 3/16	15400203	UC 211-35								2.20
2 1/4	15400204	UC 212-36								3.60
2 3/8	15400206	UC 212-38	4.3307	2.563	1.063	1.000	1.563	.413	3/8-24	3.05
2 7/16	15400207	UC 212-39								2.85
2 1/2	15400208	UC 213-40	4.7244	2.563	1.102	1.000	1.563	.472	3/8-24	4.05
2 3/4	15400212	UC 214-44	4.9213	2.937	1.181	1.189	1.748	.472	1/2-20	4.45
2 15/16	15400215	UC 215-47								5.15
3	15400300	UC 215-48	5.1181	3.063	1.181	1.311	1.752	.472	1/2-20	4.40
3 7/16	15400307	UC 218-55	6.2990	3.780	1.457	1.563	2.217	.551	1/2-20	9.90

BALL BEARINGS



NORMAL DUTY UC 200 SERIES INSERT



BALL BEARINGS