

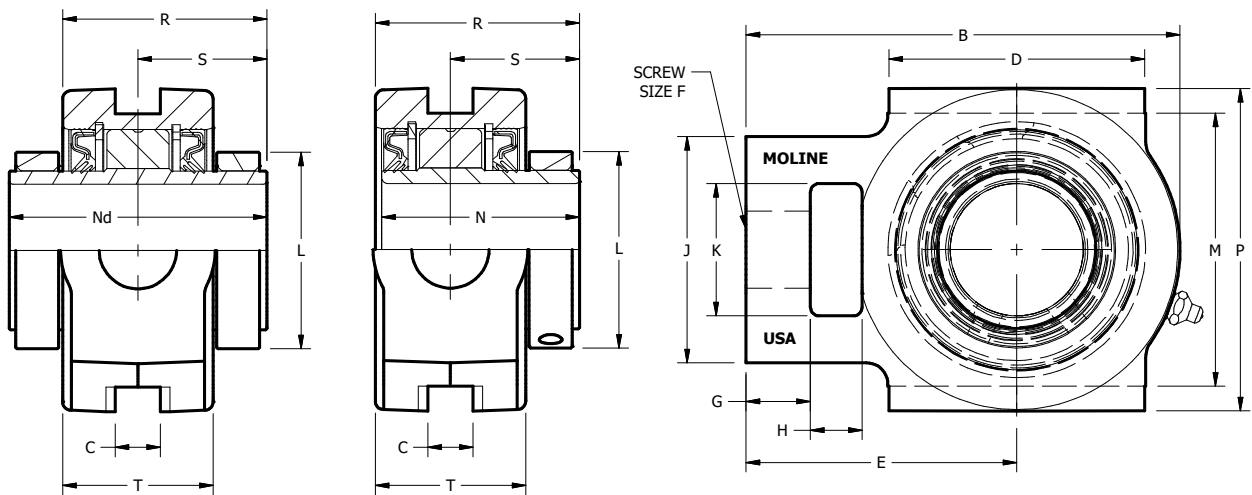
M2000 WIDE SLOT TAKE-UP, SINGLE AND DOUBLE COLLAR

SHAFT SIZE	MOLINE PART #		DIMENSIONS (INCHES)							
	EXP	NON-EXP	B	C	D	E	F	G	H	J
1 15/16	19151115	19251115								
2	19151200	19251200	6 5/16	1 1/16	3 3/4	3 15/16	1	15/16	3/4	3 5/16
50mm	19151050	19251050								
2 3/16	19151203	19251203								
2 1/4	19151204	19251204	7 1/8	1 3/16	3 3/4	4 5/8	1 1/8	1	1	3 7/8
55mm	19151055	19251055								
2 7/16	19151207	19251207								
2 1/2	19151208	19251208								
60mm	19151060	19251060	7 13/16	1 1/32	4 1/2	5 1/16	1 1/2	1 1/16	1 1/4	4 1/4
65mm	19151065	19251065								
2 11/16	19151211	19251211								
2 3/4	19151212	19251212								
2 15/16	19151215	19251215								
3	19151300	19251300	9 1/8	1 25/32	4 3/4	5 7/8	1 1/2	1 3/8	1 1/4	4 7/8
70mm	19151070	19251070								
75mm	19151075	19251075								

Starting at Sizes 1 15/16 add Suffix "D" to part number for Double Collar Spherical assembly.
Assembled with Timken™ Spherical Roller Bearings.

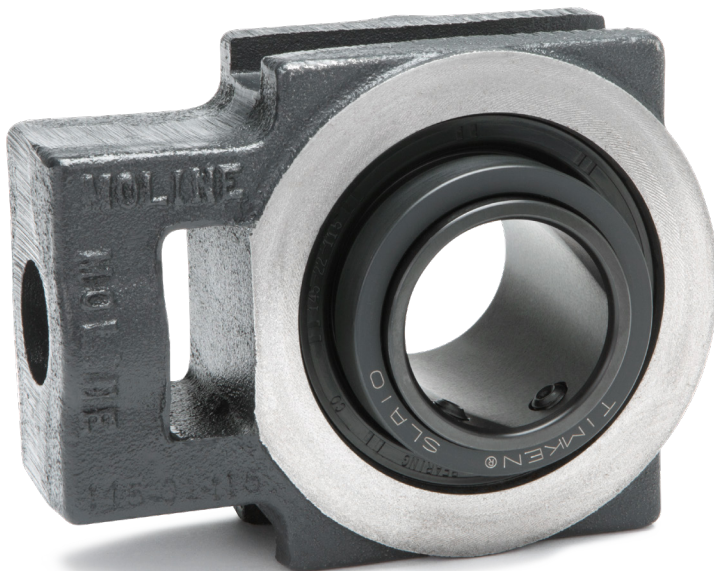
DOUBLE COLLAR
1-15/16" - 4"
50mm - 100mm

SINGLE COLLAR
1-15/16" - 4"
50mm - 100mm



M2000 WIDE SLOT TAKE-UP, SINGLE AND DOUBLE COLLAR

SHAFT SIZE	DIMENSIONS (INCHES)									WEIGHT LBS.
	K	L	M	N SINGLE	Nd DOUBLE	P	R	S	T	
1 15/16 2 50mm	1 15/16	2 7/8	4	2 7/8	3 3/4	4 3/4	3 1/16	1 7/8	2 7/16	10
2 3/16 2 1/4 55mm	2 1/4	3 1/4	4 1/2	3 1/8	4	5 1/4	3 1/4	2	2 9/16	12
2 7/16 2 1/2 60mm 65mm	2 1/2	4	5 1/8	3 3/8	4 5/16	6	3 1/2	2 1/8	2 3/4	16
2 11/16 2 3/4 2 15/16 3 70mm 75mm	2 3/4	4 3/8	5 15/16	3 5/8	4 3/4	6 3/4	3 7/8	2 3/8	3	22



M2000 SPHERICALS

For personal service 800.242.4633
CAD drawings at no additional charge
For nomenclature see pages 240 and 241

MOLINE BEARING CO

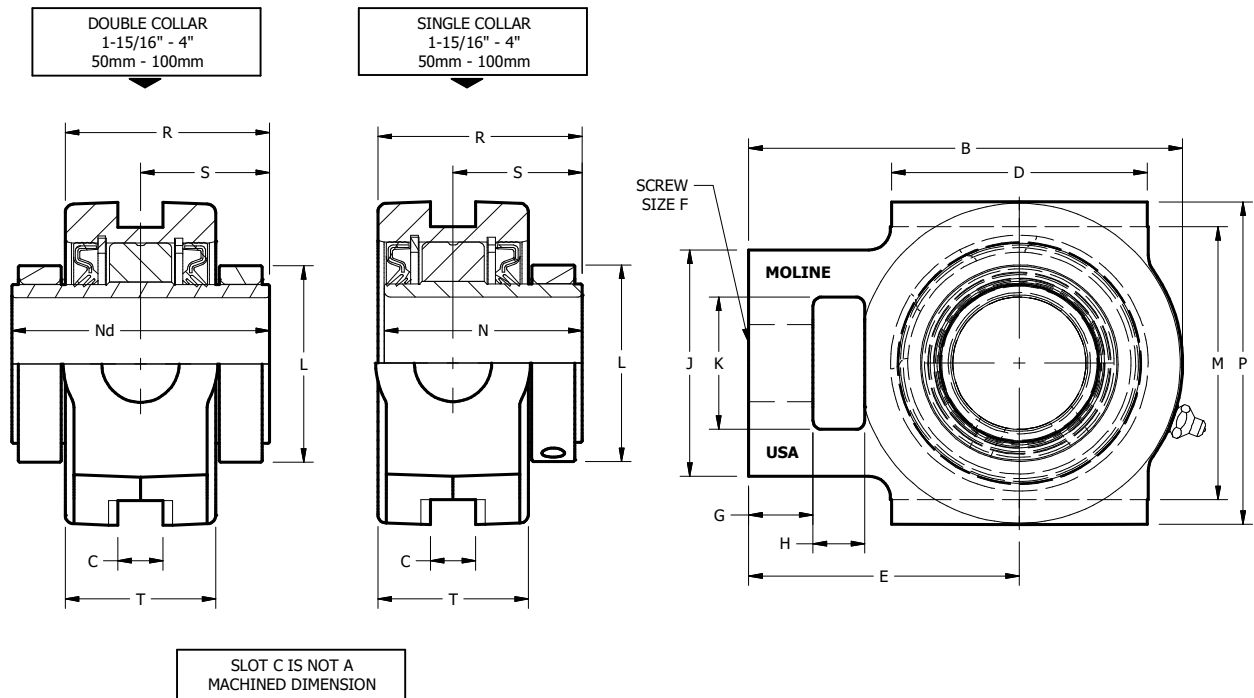


M2000 WIDE SLOT TAKE-UP, SINGLE AND DOUBLE COLLAR

SHAFT SIZE	MOLINE PART #		DIMENSIONS (INCHES)							
	EXP	NON-EXP	B	C	D	E	F	G	H	J
3 3/16	19151303	19251303								
3 7/16	19151307	19251307								
3 1/2	19151308	19251308								
80mm	19151080	19251080	10 1/4	1 25/32	6	6 3/8	1 3/4	1 1/16	1 5/8	4 7/8
85mm	19151085	19251085								
90mm	19151090	19251090								
3 11/16	19151311	19251311								
3 15/16	19151315	19251315								
4	19151400	19251400	12 9/16	2 1/16	7	8 3/8	2	2 1/16	2 1/8	6
100mm	19151100	19251100								

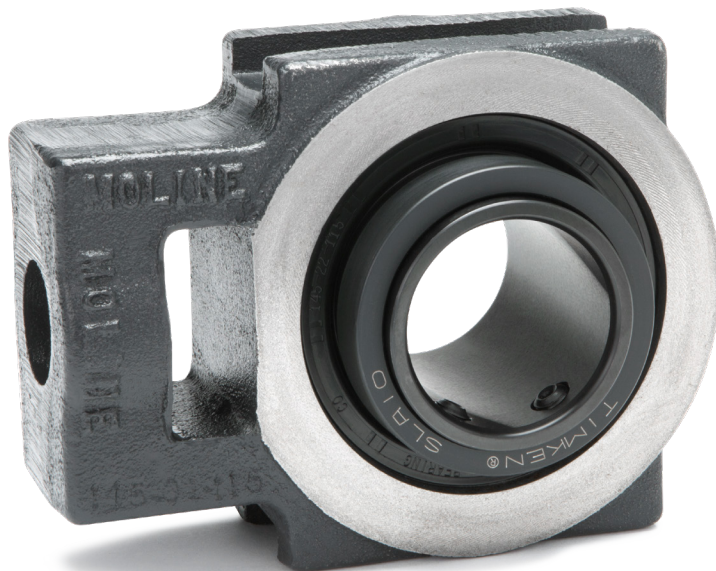
Starting at Sizes 1 15/16 add Suffix "D" to part number for Double Collar Spherical assembly.
Assembled with Timken™ Spherical Roller Bearings.

M2000
SPHERICALS



M2000 WIDE SLOT TAKE-UP, SINGLE AND DOUBLE COLLAR

SHAFT SIZE	DIMENSIONS (INCHES)									WEIGHT LBS.
	K	L	M	N SINGLE	Nd DOUBLE	P	R	S	T	
3 3/16 3 7/16 3 1/2 80mm 85mm 90mm	2 7/8	5 1/8	6 13/16	4 1/32	5 3/16	7 13/16	4 1/2	2 19/32	3 5/8	38
3 11/16 3 15/16 4 100mm	3 3/8	6 1/16	8 5/8	4 19/32	5 15/16	9 7/16	4 11/16	2 15/16	3 1/2	67



M2000 SPHERICALS

For personal service 800.242.4633
 CAD drawings at no additional charge
 For nomenclature see pages 240 and 241

MOLINE BEARING CO

