

COATINGS AND FINISHES

When you need extra protection for your bearing, or have a unique operating environment, consider using one of our new specialty coatings for your mounted bearings.

Let us help you reduce costs by letting Moline handle your coating needs.

While we offer **moline+color** traditional powder coating services in a limitless range of colors, it does not stop there; High temp, Ceramic coatings, Heat dissipation, Stainless Steel powder coating, Anti-microbial epoxy, Nickel plating, Teflon coating and Marine grade coatings are available.

For your OEM customers. All of our coatings exceed customer specifications and requirements, resulting in longer life and a better end product. Custom matching of colors, including small batch runs are no issue. Our capabilities include custom formulations, custom colors, UV resistance, and corrosion protection.

Stainless Steel Coating

Moline can provide a patented stainless steel coating that is highly protective, anti-corrosive and so durable, it will handle high detergent/antibacterial wash downs commonly used in the food industry. Moline can offer an “antimicrobial” finish that is direct contact USDA/FDA Certified for food & consumables.

Specialty Coatings can provide longer bearing life

RAL or custom color matching is available

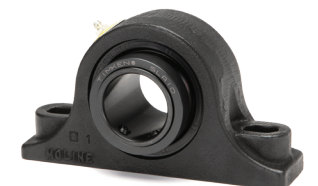
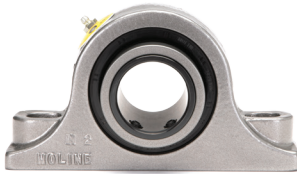
Reduce costs by letting Moline provide your custom painting or coatings

Protective Stainless Steel Powder Coatings for enhanced corrosion resistance

Stainless Powdercoat
Type E 4-Bolt Flange



COATINGS AND FINISHES **moline+color**



SPECIALTY SERVICES

For personal service 800.242.4633
CAD drawings at no additional charge
For nomenclature see pages 226 and 227

MOLINE BEARING CO

