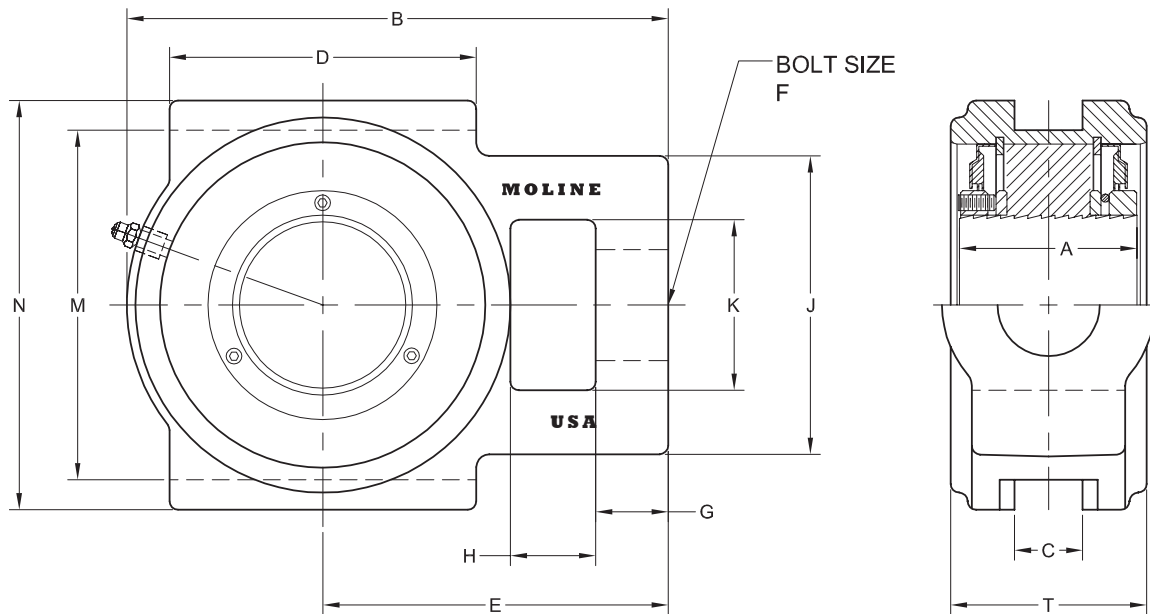


# M3000 EVEN-LOK™ WIDE SLOT TAKE-UP

SHAFT SIZE	MOLINE PART #		DIMENSIONS (INCHES)				
	EXP	NON-EXP	A	B	C	D	E
1 <sup>15</sup> / <sub>16</sub> 2	19651115 19651200	19751115 19751200	2 <sup>11</sup> / <sub>32</sub>	6 <sup>5</sup> / <sub>16</sub>	1 <sup>1</sup> / <sub>16</sub>	3 <sup>3</sup> / <sub>4</sub>	3 <sup>15</sup> / <sub>16</sub>
2 <sup>3</sup> / <sub>16</sub>	19651203	19751203	2 <sup>11</sup> / <sub>32</sub>	7 <sup>1</sup> / <sub>8</sub>	1 <sup>3</sup> / <sub>16</sub>	3 <sup>3</sup> / <sub>4</sub>	4 <sup>5</sup> / <sub>8</sub>
2 <sup>7</sup> / <sub>16</sub> 2 <sup>1</sup> / <sub>2</sub>	19651207 19651208	19751207 19751208	2 <sup>37</sup> / <sub>64</sub>	7 <sup>13</sup> / <sub>16</sub>	1 <sup>1</sup> / <sub>32</sub>	4 <sup>1</sup> / <sub>2</sub>	5 <sup>1</sup> / <sub>16</sub>
2 <sup>11</sup> / <sub>16</sub> 2 <sup>3</sup> / <sub>4</sub> 2 <sup>15</sup> / <sub>16</sub> 3	19651211 19651212 19651215 19651300	19751211 19751212 19751215 19751300	2 <sup>37</sup> / <sub>64</sub>	9 <sup>1</sup> / <sub>8</sub>	1 <sup>25</sup> / <sub>32</sub>	4 <sup>3</sup> / <sub>4</sub>	5 <sup>7</sup> / <sub>8</sub>
3 <sup>7</sup> / <sub>16</sub> 3 <sup>1</sup> / <sub>2</sub>	19651307 19651308	19751307 19751308	3 <sup>9</sup> / <sub>64</sub>	10 <sup>1</sup> / <sub>4</sub>	1 <sup>25</sup> / <sub>32</sub>	6	6 <sup>3</sup> / <sub>8</sub>

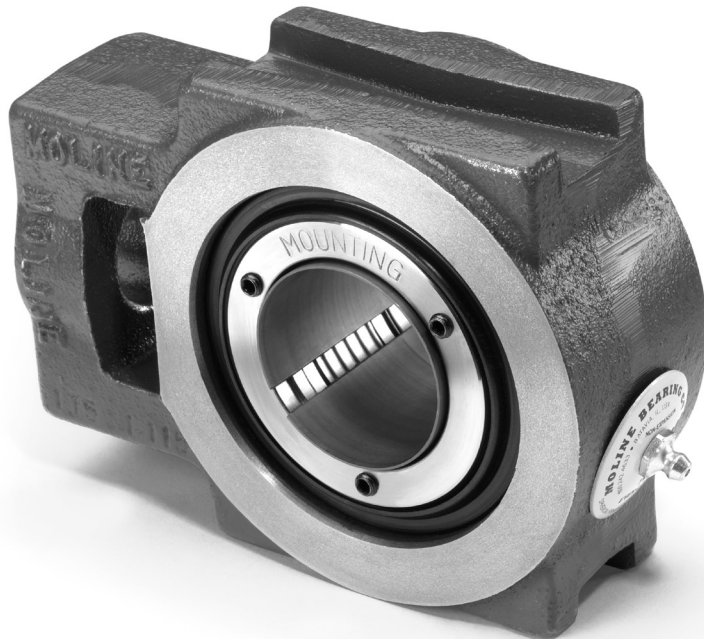
Refer to Mounting and Dismounting Instructions on pages 86 and 87.



# M3000 EVEN-LOK™ WIDE SLOT TAKE-UP

SHAFT SIZE	DIMENSIONS (INCHES)								WEIGHT LBS.
	F	G	H	J	K	M	N	T	
1 <sup>15</sup> / <sub>16</sub> 2	1	<sup>15</sup> / <sub>16</sub>	<sup>3</sup> / <sub>4</sub>	3 <sup>5</sup> / <sub>16</sub>	1 <sup>15</sup> / <sub>16</sub>	4	4 <sup>3</sup> / <sub>4</sub>	2 <sup>7</sup> / <sub>16</sub>	12
2 <sup>3</sup> / <sub>16</sub>	1 <sup>1</sup> / <sub>8</sub>	1	1	3 <sup>7</sup> / <sub>8</sub>	2 <sup>1</sup> / <sub>4</sub>	4 <sup>1</sup> / <sub>2</sub>	5 <sup>1</sup> / <sub>4</sub>	2 <sup>9</sup> / <sub>16</sub>	16
2 <sup>7</sup> / <sub>16</sub> 2 <sup>1</sup> / <sub>2</sub>	1 <sup>1</sup> / <sub>2</sub>	1 <sup>1</sup> / <sub>16</sub>	1 <sup>1</sup> / <sub>4</sub>	4 <sup>1</sup> / <sub>4</sub>	2 <sup>1</sup> / <sub>2</sub>	5 <sup>1</sup> / <sub>8</sub>	6	2 <sup>3</sup> / <sub>4</sub>	21
2 <sup>11</sup> / <sub>16</sub> 2 <sup>3</sup> / <sub>4</sub> 2 <sup>15</sup> / <sub>16</sub> 3	1 <sup>1</sup> / <sub>2</sub>	1 <sup>3</sup> / <sub>8</sub>	1 <sup>1</sup> / <sub>4</sub>	4 <sup>7</sup> / <sub>8</sub>	2 <sup>3</sup> / <sub>4</sub>	5 <sup>15</sup> / <sub>16</sub>	6 <sup>3</sup> / <sub>4</sub>	3	30
3 <sup>7</sup> / <sub>16</sub> 3 <sup>1</sup> / <sub>2</sub>	1 <sup>3</sup> / <sub>4</sub>	1 <sup>1</sup> / <sub>16</sub>	1 <sup>5</sup> / <sub>8</sub>	4 <sup>7</sup> / <sub>8</sub>	2 <sup>7</sup> / <sub>8</sub>	6 <sup>13</sup> / <sub>16</sub>	7 <sup>13</sup> / <sub>16</sub>	3 <sup>13</sup> / <sub>16</sub>	45

M3000 EVEN-LOK™  
SPHERICALS



For personal service and special requests, please call us at 800.242.4633.

CAD drawings available upon request at no additional charge.

**For nomenclature see pages 226 and 227.**



Post Office Box 99, Batavia, Illinois 60510, USA  
630.584.4600, 800.242.4633, 630.584.1999 fax  
www.molinebearing.com, sales@molinebearing.com

**MOLINE BEARING CO.**

TEL # **800.242.4633**