

# QD WELD-ON HUBS

## QD Weld-On Hubs JA to P-A

PART NUMBER	D	L	B	BC	L1	P	DRILLING TYPE	WEIGHT (LBS)
JA-A	2.25	$\frac{9}{16}$	1.375	$1\frac{21}{32}$	----	----	1	.4
SH-A	3.0	$\frac{13}{16}$	1.871	$2\frac{1}{4}$	----	----	1	1
SDS-A	3.5	$\frac{3}{4}$	2.188	$2\frac{11}{16}$	----	----	1	1.25
SK-A	4.375	$1\frac{1}{4}$	2.813	$3\frac{5}{16}$	----	----	1	3
SF-A	5.0	$1\frac{1}{4}$	3.125	$3\frac{7}{8}$	----	----	1	4
E-A	6.25	$1\frac{5}{8}$	3.832	5	----	----	1	9
F-A	7.0	$2\frac{1}{2}$	4.437	$5\frac{5}{8}$	----	----	1	16
J-A	7.75	$3\frac{3}{16}$	5.14	$6\frac{1}{4}$	----	----	1	22.5
M-A	9.5	$5\frac{5}{16}$	6.494	$7\frac{7}{8}$	$3\frac{9}{16}$	9.250	2	50
N-A	10.5	$6\frac{1}{4}$	6.99	$8\frac{1}{2}$	$4\frac{1}{2}$	10.250	2	75
P-A	15.5	$7\frac{1}{4}$	8.24	10	----	----	2	155

QD Weld-On Hubs are 1035 Steel.

WELD-ON HUBS



222

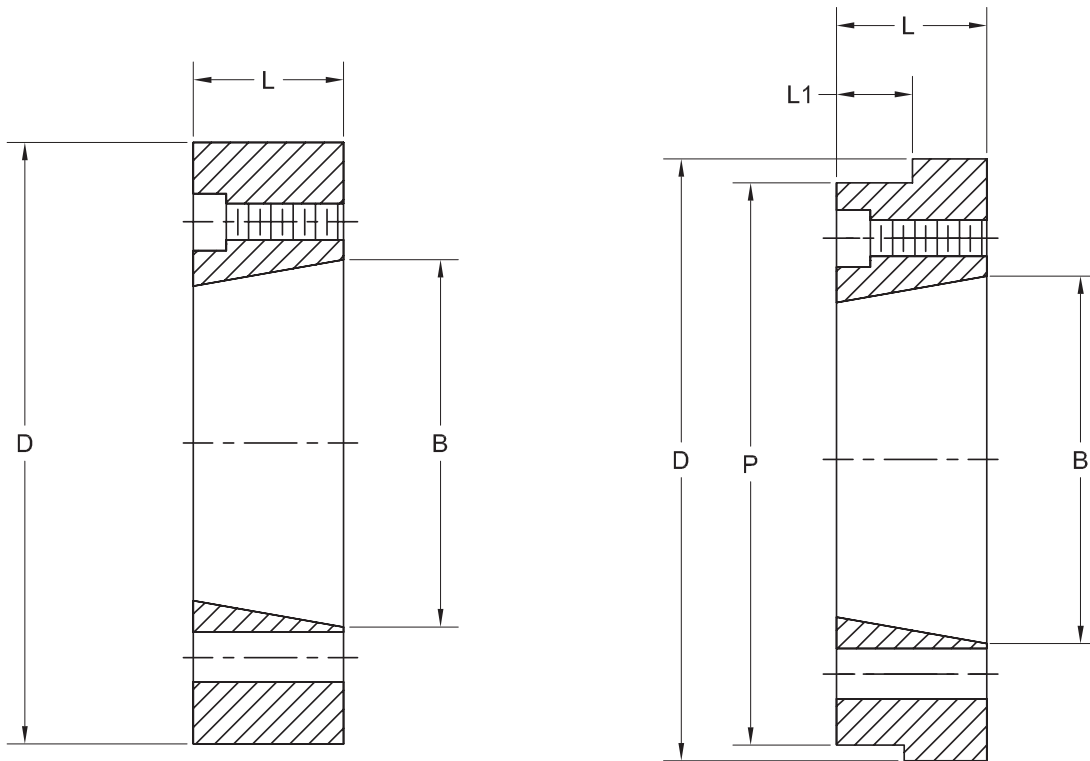
TEL # **800.242.4633**



Post Office Box 99, Batavia, Illinois 60510, USA  
630.584.4600, 800.242.4633, 630.584.1999 fax  
www.molinebearing.com, sales@molinebearing.com

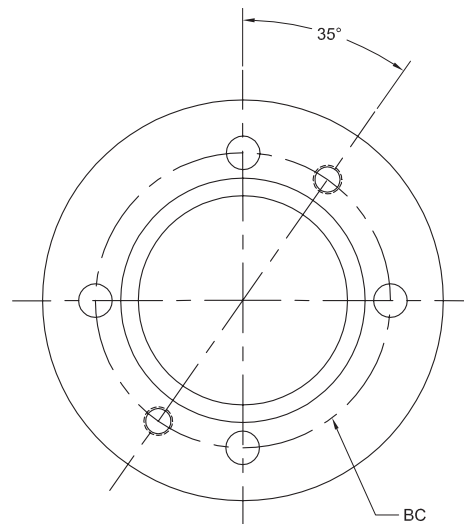
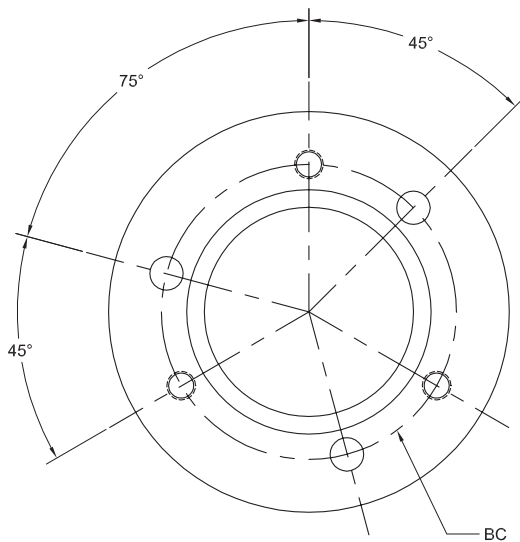
**MOLINE BEARING CO.**

# QD WELD-ON HUBS



TYPE 1 (standard or reverse mount)

TYPE 2 (standard mount only)



WELD-ON HUBS



Post Office Box 99, Batavia, Illinois 60510, USA  
 630.584.4600, 800.242.4633, 630.584.1999 fax  
 www.molinebearing.com, sales@molinebearing.com

**MOLINE BEARING CO.**

TEL # **800.242.4633**

223