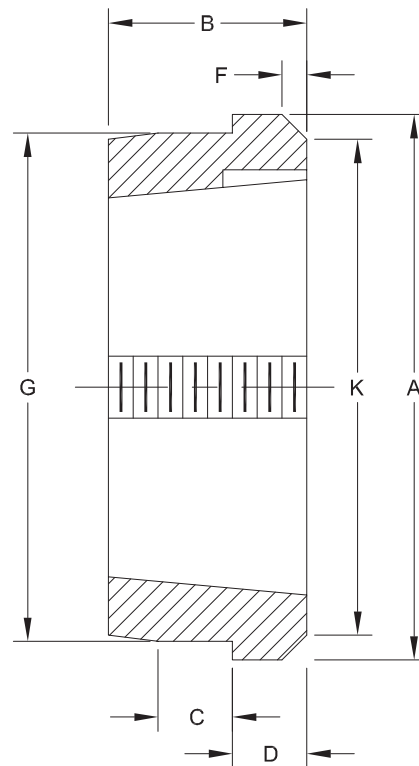


TYPE W—TAPERED WELD-ON HUBS

PART NUMBER	FOR USE WITH BUSHING	MAX BORE OF BUSHING	A	G	B	C	D	F	K	WEIGHT LBS.
W-12-1210	1210	1 ¼	2 ⅞	2 ½	1	⅜	⅝	⅜	2 ⅝	1.1
W-12-1215	1210 1215	1 ¼	2 ⅞	2 ½	1 ½	⅜	⅝	⅜	2 ⅝	1.3
W-16-1610	1610	1 ⅝	3 ¼	2 ⅞	1	⅜	⅝	⅜	3	1.25
W-16-1615	1610 1615	1 ⅝	3 ¼	2 ⅞	1 ½	⅜	⅝	⅜	3	1.5
W-25-2517	2517	2 ½	4 ⅞	4 ⅜	1 ¾	½	¾	⅜	4 ⅝	4.0
WA-30-3020	3020	3	5 ½	5 ⅛	2	¾	¾	¼	5	4.4
WA-30-3030	3020 3030	3	5 ½	5 ⅛	3.0	¾	¾	¼	5	6.4
WA-35-3535	3535	3 ½	6 ¾	6 ¼	3 ½	1 ¼	1.0	⅜	6	13
WA-40-4040	4040	4	7 ¾	7 ¼	4.0	1 ½	1.0	⅜	7	29
WA-45-4545	4545	4 ½	8 ¾	8.0	4 ½	1 ¾	1.0	⅜	8	42
WA-50-5050	5050	5	9 ½	8 ¾	5	1 ¾	1.0	⅝	8 ¾	57

Type W Tapered Weld-On Hubs are 1035 Steel.



WELD-ON HUBS



Post Office Box 99, Batavia, Illinois 60510, USA
630.584.4600, 800.242.4633, 630.584.1999 fax
www.molinebearing.com, sales@molinebearing.com

MOLINE BEARING CO.

TEL # **800.242.4633**

221