

# TAPERED BUSHINGS #4545 TO 5050

BUSHING #	BORE	BUSHING KEYWAY	SHAFT KEYSEAT	A	B	D	F	G	WRENCH TORQUE LBS. -IN	TORQUE CAP. LBS. -IN.	WEIGHT
4545	1 15/16, 2, 2 1/8, 2 3/16, 2 1/4	1/2 x 1/4	1/2 x 1/4	6 3/8	4 1/2	6.13	3/4 x 2	40°	2,450	126,000	30
	2 5/16, 2 3/8, 2 7/16, 2 1/2, 2 9/16, 2 5/8, 2 11/16, 2 3/4	5/8 x 5/16	5/8 x 5/16								28
	2 13/16, 2 7/8, 2 15/16, 3, 3 3/16, 3 1/4	3/4 x 3/8	3/4 x 3/8								26
	3 5/16, 3 3/8, 3 7/16, 3 1/2, 3 9/16, 3 5/8, 3 11/16, 3 3/4	7/8 x 7/16	7/8 x 7/16								23
	3 13/16, 3 7/8, 3 15/16, 4, 4 1/8, 4 3/16, 4 1/4	1 x 1/2	1 x 1/2								20
	4 5/16, 4 3/8*, 4 7/16*, 4 1/2*	1 x 1/4	1 x 1/2								16
	4 15/16*	1 1/4 x 1/4	1 1/4 x 5/8								13
5050	2 7/16	5/8 x 5/16	5/8 x 5/16	7	5	6.72	7/8 x 2 1/4	40°	3,100	126,000	38.7
	2 15/16	3/4 x 3/8	3/4 x 3/8								36.2
	3 3/8, 3 7/16, 3 5/8	7/8 x 7/16	7/8 x 7/16								32
	3 7/8, 3 15/16, 4, 4 1/4, 4 3/8, 4 7/16, 4 1/2	1 x 1/2	1 x 1/2								26
	4 7/8*, 4 15/16*, 5*	1 1/4 x 7/16*	1 1/4 x 5/8								20.5

\*Denotes shallow key, keystock included. Bushings supplied with set screws made of Class 30 cast iron.

OD, TAPERED & D BUSHINGS



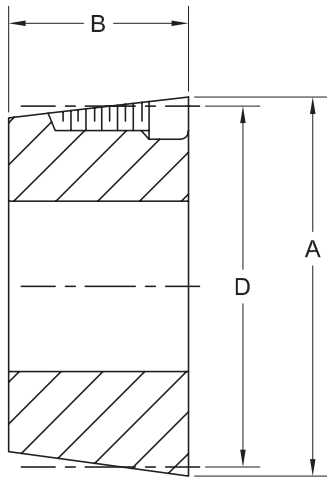
Post Office Box 99, Batavia, Illinois 60510, USA  
 630.584.4600, 800.242.4633, 630.584.1999 fax  
 www.molinebearing.com, sales@molinebearing.com

**MOLINE BEARING CO.**

TEL # **800.242.4633**

215

# TAPERED BUSHINGS #4545 TO 5050



8° Taper Included angle

SECTION A-A

