

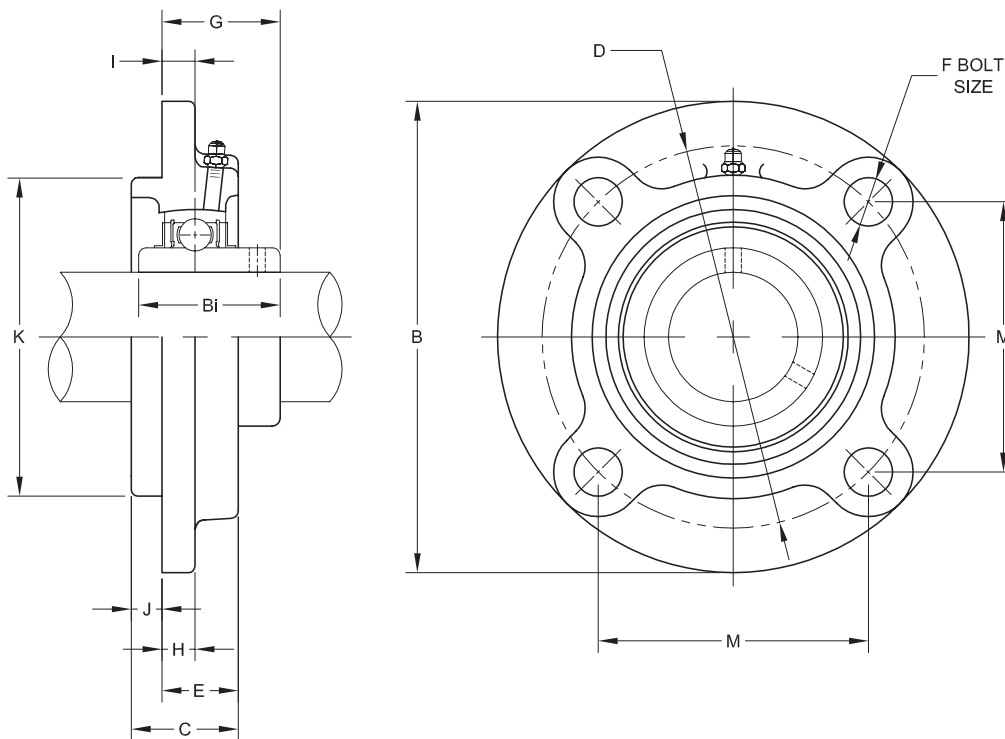
# MOUNTED BALL BEARING PILOTED FLANGE

## UCFC 200 Series—Normal Duty Set Screw Locking Collar

BALL BEARINGS

| SHAFT SIZE | MOLINE PART # | UNIT #      | DIMENSIONS (INCHES) |       |       |      |       |      |
|------------|---------------|-------------|---------------------|-------|-------|------|-------|------|
|            |               |             | B                   | D     | M     | I    | C     | F    |
| 3/4        | 19431012      | UCFC 204-12 | 3 15/16             | 3.072 | 2.169 | .394 | 1     | .453 |
| 7/8        | 19431014      | UCFC 205-14 | 4.527               | 3.543 | 2.504 | .394 | 1.063 | .472 |
| 15/16      | 19431015      | UCFC 205-15 |                     |       |       |      |       |      |
| 1          | 19431100      | UCFC 205-16 |                     |       |       |      |       |      |
| 1 1/8      | 19431102      | UCFC 206-18 | 4.921               | 3.937 | 2.783 | .394 | 1.220 | .472 |
| 1 3/16     | 19431103      | UCFC 206-19 |                     |       |       |      |       |      |
| 1 1/4      | 19431104-06   | UCFC 206-20 |                     |       |       |      |       |      |
| 1 1/4      | 19431104      | UCFC 207-20 | 5.315               | 4.331 | 3.063 | .433 | 1.338 | .551 |
| 1 5/16     | 19431105      | UCFC 207-21 |                     |       |       |      |       |      |
| 1 3/8      | 19431106      | UCFC 207-22 |                     |       |       |      |       |      |
| 1 7/16     | 19431107      | UCFC 207-23 |                     |       |       |      |       |      |
| 1 1/2      | 19431108      | UCFC 208-24 | 5.709               | 4.724 | 3.338 | .433 | 1.417 | .551 |
| 1 9/16     | 19431109      | UCFC 208-25 |                     |       |       |      |       |      |

For sale as complete units, inserts and housings.



# MOUNTED BALL BEARING PILOTED FLANGE

BALL BEARINGS

| SHAFT SIZE                         | DIMENSIONS (INCHES) |      |       |        |       |        | BOLT SIZE (INCHES) | INSERT #   | HOUSING # | WEIGHT LBS. |
|------------------------------------|---------------------|------|-------|--------|-------|--------|--------------------|--|-----------|-------------|
|                                    | J                   | H    | E     | K      | G     | Bi     |                    |  |           |             |
| 3/4                                | .197                | .236 | .807  | 2.4409 | 1.114 | 1.2205 | 3/8                | UC 204-12  | FC204     | 1.68        |
| 7/8<br>15/16<br>1                  | .236                | .275 | .827  | 2.7559 | 1.169 | 1.3386 | 3/8                | UC 205-14<br>UC 205-15<br>UC 205-16              | FC205     | 2.12        |
| 1 1/8<br>1 3/16<br>1 1/4           | .315                | .315 | .905  | 3.1496 | 1.268 | 1.50   | 3/8                | UC 206-18<br>UC 206-19<br>UC 206-20              | FC206     | 3.02        |
| 1 1/4<br>1 5/16<br>1 3/8<br>1 7/16 | .315                | .354 | 1.023 | 3.5433 | 1.433 | 1.689  | 7/16               | UC 207-20<br>UC 207-21<br>UC 207-22<br>UC 207-23 | FC207     | 3.75        |
| 1 1/2<br>1 9/16                    | .394                | .354 | 1.023 | 3.937  | 1.622 | 1.937  | 7/16               | UC 208-24<br>UC 208-25                           | FC208     | 4.41        |



For personal service and special requests, please call us at 800.242.4633.

CAD drawings available upon request at no additional charge.

**Furnished in non-expansion type only.**

**For nomenclature see pages 226 and 227.**



Post Office Box 99, Batavia, Illinois 60510, USA  
630.584.4600, 800.242.4633, 630.584.1999 fax  
www.molinebearing.com, sales@molinebearing.com

**MOLINE BEARING CO.**

TEL # **800.242.4633**

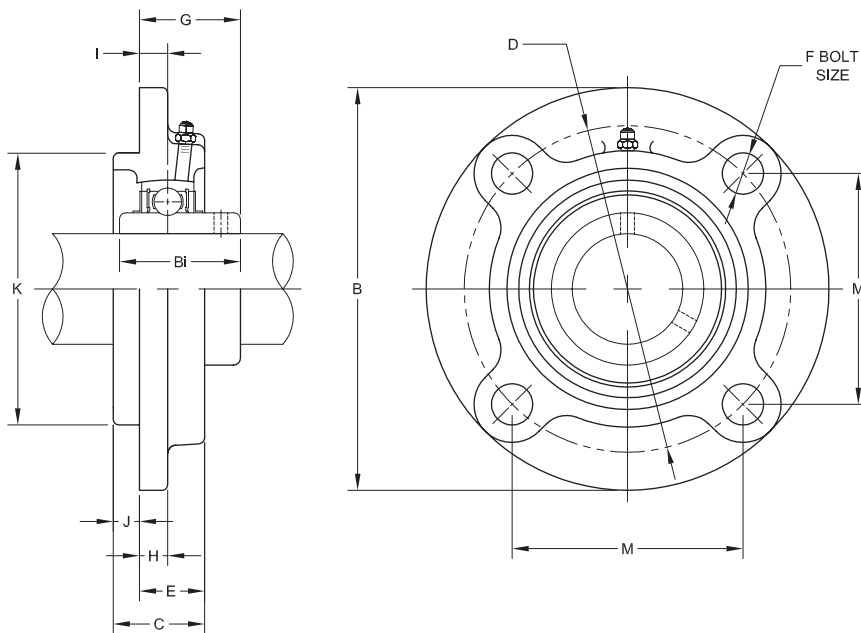
155

# MOUNTED BALL BEARING PILOTED FLANGE CONTINUED

## UCFC 200 Series—Normal Duty Set Screw Locking Collar

| SHAFT SIZE | MOLINE PART # | UNIT #      | DIMENSIONS (INCHES) |       |       |      |       |      |
|------------|---------------|-------------|---------------------|-------|-------|------|-------|------|
|            |               |             | B                   | D     | M     | I    | C     | F    |
| 1 5/8      | 19431110      | UCFC 209-26 | 6.299               | 5.197 | 3.673 | .394 | 1.496 | .630 |
| 1 11/16    | 19431111      | UCFC 209-27 |                     |       |       |      |       |      |
| 1 3/4      | 19431112      | UCFC 209-28 |                     |       |       |      |       |      |
| 1 7/8      | 19431114      | UCFC 210-30 | 6.496               | 5.433 | 3.842 | .394 | 1.575 | .630 |
| 1 15/16    | 19431115      | UCFC 210-31 |                     |       |       |      |       |      |
| 2          | 19431200-10   | UCFC 210-32 |                     |       |       |      |       |      |
| 2          | 19431200      | UCFC 211-32 | 7.283               | 5.905 | 4.177 | .512 | 1.653 | .748 |
| 2 1/8      | 19431202      | UCFC 211-34 |                     |       |       |      |       |      |
| 2 3/16     | 19431203      | UCFC 211-35 |                     |       |       |      |       |      |
| 2 1/4      | 19431204      | UCFC 212-36 | 7.677               | 6.299 | 4.453 | .669 | 1.890 | .748 |
| 2 3/8      | 19431206      | UCFC 212-38 |                     |       |       |      |       |      |
| 2 7/16     | 19431207      | UCFC 212-39 |                     |       |       |      |       |      |
| 2 1/2      | 19431208      | UCFC 213-40 | 8.071               | 6.693 | 4.732 | .630 | 1.929 | .748 |
| 2 3/4      | 19431212      | UCFC 214-44 | 8.465               | 6.969 | 4.925 | .669 | 2.126 | .748 |
| 2 15/16    | 19431215      | UCFC 215-47 | 8.661               | 7.244 | 5.122 | .669 | 2.165 | .748 |
| 3          | 19431300      | UCFC 215-48 |                     |       |       |      |       |      |

For sale as complete units, inserts and housings.



# MOUNTED BALL BEARING PILOTED FLANGE

| SHAFT SIZE                | DIMENSIONS (INCHES) |      |       |        |       |        | BOLT SIZE (INCHES) | INSERT #                            | HOUSING # | WEIGHT LBS. |
|---------------------------|---------------------|------|-------|--------|-------|--------|--------------------|-------------------------------------|-----------|-------------|
|                           | J                   | H    | E     | K      | G     | Bi     |                    |                                     |           |             |
| 1 5/8<br>1 11/16<br>1 3/4 | .472                | .394 | 1.023 | 4.1339 | 1.583 | 1.937  | 1/2                | UC 209-26<br>UC 209-27<br>UC 209-28 | FC209     | 5.95        |
| 1 7/8<br>1 15/16<br>2     | .472                | .551 | 1.102 | 4.3307 | 1.677 | 2.0315 | 1/2                | UC 210-30<br>UC 210-31<br>UC 210-32 | FC210     | 6.39        |
| 2<br>2 1/8<br>2 3/16      | .472                | .512 | 1.181 | 4.9213 | 1.827 | 2.189  | 5/8                | UC 211-32<br>UC 211-34<br>UC 211-35 | FC211     | 9.26        |
| 2 1/4<br>2 3/8<br>2 7/16  | .472                | .591 | 1.417 | 5.315  | 2.232 | 2.563  | 5/8                | UC 212-36<br>UC 212-38<br>UC 212-39 | FC212     | 10.89       |
| 2 1/2                     | .551                | .591 | 1.378 | 5.709  | 2.193 | 2.563  | 5/8                | UC 213-40                           | FC213     | 12.57       |
| 2 3/4                     | .551                | .630 | 1.496 | 5.905  | 2.417 | 2.937  | 5/8                | UC 214-44                           | FC214     | 14.99       |
| 2 15/16<br>3              | .630                | .669 | 1.535 | 6.2992 | 2.461 | 3.063  | 5/8                | UC 215-47<br>UC 215-48              | FC215     | 29.76       |

BALL BEARINGS



For personal service and special requests, please call us at 800.242.4633.  
 CAD drawings available upon request at no additional charge.  
**Furnished in non-expansion type only.**  
**For nomenclature see pages 226 and 227.**



Post Office Box 99, Batavia, Illinois 60510, USA  
 630.584.4600, 800.242.4633, 630.584.1999 fax  
 www.molinebearing.com, sales@molinebearing.com

**MOLINE BEARING CO.**

TEL # **800.242.4633**