

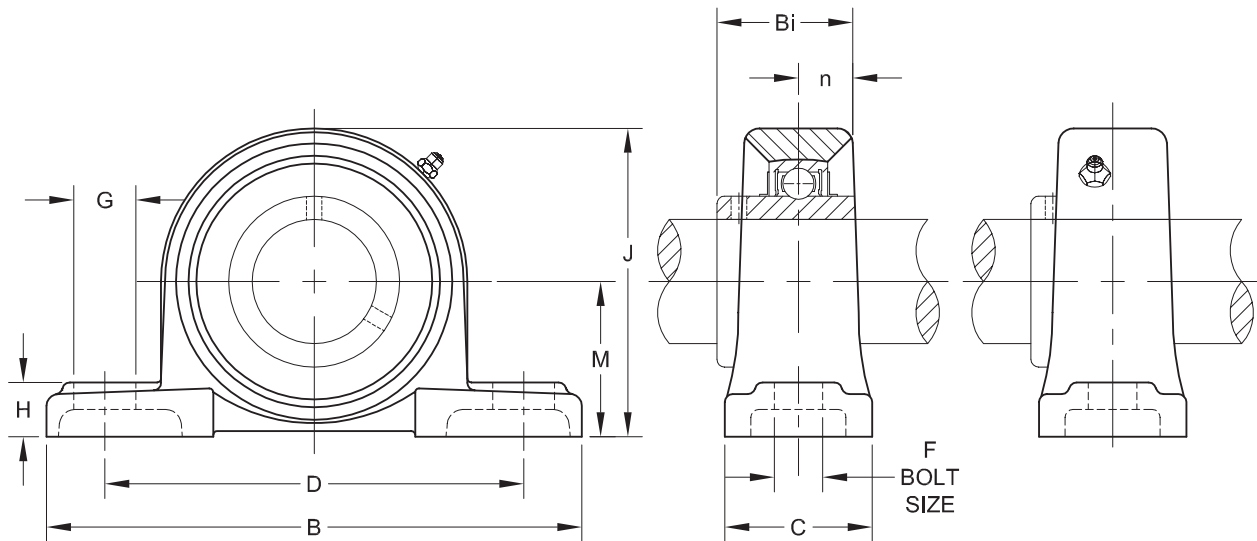
MOUNTED BALL BEARING 2-BOLT PILLOW BLOCK

UCP 200 Series—Normal Duty Set Screw Locking Collar

BALL BEARINGS

SHAFT SIZE	MOLINE PART #	UNIT #	DIMENSIONS (INCHES)				
			M	B	D	C	F
1/2	19421008	UCP 201-8					
5/8	19421010	UCP 202-10	1 5/16	5	3.779	1.456	1/2
3/4	19421012	UCP 204-12					
7/8	19421014	UCP 205-14					
15/16	19421015	UCP 205-15	1 7/16	5 1/2	4 1/8	1 1/2	1/2
1	19421100	UCP 205-16					
1 1/8	19421102	UCP 206-18					
1 3/16	19421103	UCP 206-19	1 11/16	6 1/4	4 3/4	1.732	.551
1 1/4	19421104-06	UCP 206-20					
1 1/4	19421104	UCP 207-20					
1 5/16	19421105	UCP 207-21	1 7/8	6 9/16	5	1-7/8	.590
1 3/8	19421106	UCP 207-22					
1 7/16	19421107	UCP 207-23					
1 1/2	19421108	UCP 208-24	1 15/16	7 1/4	5.354	2.047	.590
1 9/16	19421109	UCP 208-25					

For sale as complete units, inserts and housings.



MOUNTED BALL BEARING 2-BOLT PILLOW BLOCK

BALL BEARINGS

SHAFT SIZE	DIMENSIONS (INCHES)					BOLT SIZE (INCHES)	INSERT #	HOUSING #	WEIGHT LBS.
	G	H	J	Bi	n				
1/2 5/8 3/4	6 1/4	.551	2.511	1.22	0.500	3/8	UC 201-8 UC 202-10 UC 204-12	P204	1.43
7/8 15/16 1	3/4	.590	2.736	1.339	0.563	3/8	UC 205-14 UC 205-15 UC 205-16	P205	1.59
1 1/8 1 3/16 1 1/4	3/4	6 1/4	3.228	1.50	0.626	1/2	UC 206-18 UC 206-19 UC 206-20	P206	2.54
1 1/4 1 5/16 1 3/8 1 7/16	3/4	.669	3.622	1.689	0.689	1/2	UC 207-20 UC 207-21 UC 207-22 UC 207-23	P207	3.37
1 1/2 1 9/16	13/16	.709	3.858	1.937	0.748	1/2	UC 208-24 UC 208-25	P208	4.14



For personal service and special requests, please call us at 800.242.4633.

CAD drawings available upon request at no additional charge.

Furnished in non-expansion type only.

For nomenclature see pages 226 and 227.



Post Office Box 99, Batavia, Illinois 60510, USA
630.584.4600, 800.242.4633, 630.584.1999 fax
www.molinebearing.com, sales@molinebearing.com

MOLINE BEARING CO.

TEL # **800.242.4633**

143

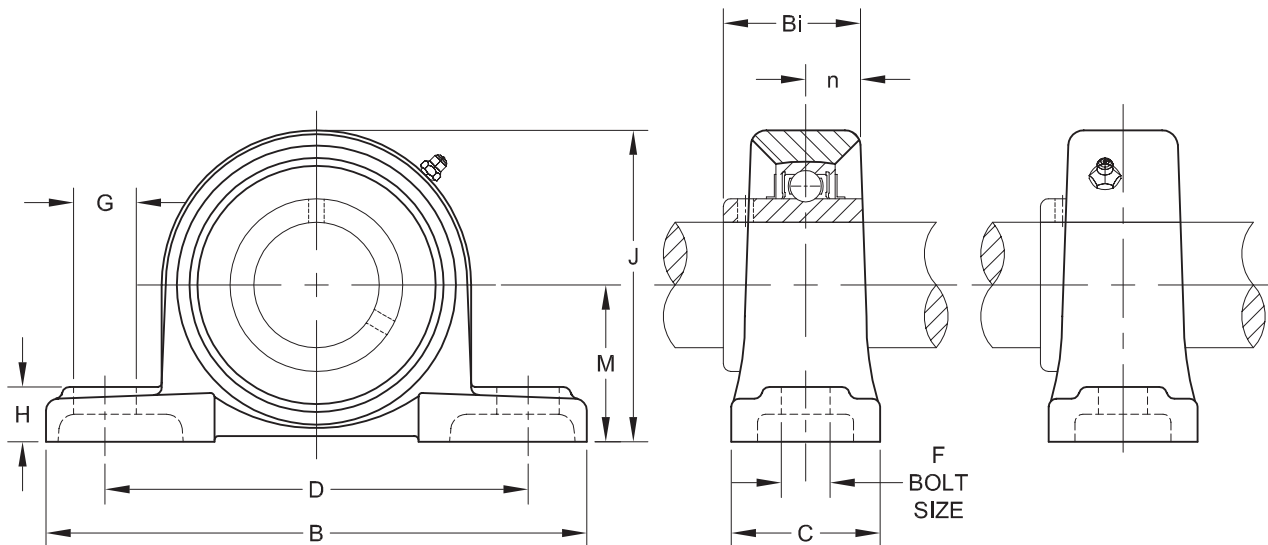
MOUNTED BALL BEARING 2-BOLT PILLOW BLOCK CONTINUED

UCP 200 Series—Normal Duty Set Screw Locking Collar

BALL BEARINGS

SHAFT SIZE	MOLINE PART #	UNIT #	DIMENSIONS (INCHES)				
			M	B	D	C	F
1 5/8 1 11/16 1 3/4	19421110 19421111 19421112	UCP 209-26 UCP 209-27 UCP 209-28	2 1/8	7.44	5 3/4	2-1/8	.590
1 7/8 1 15/16 2	19421114 19421115 19421200-10	UCP 210-30 UCP 210-31 UCP 210-32	2 1/4	8.031	6 1/4	2.244	3/4
2 2 1/8 2 3/16	19421200 19421202 19421203	UCP 211-32 UCP 211-34 UCP 211-35	2 1/2	8.543	6.771	2-3/8	3/4
2 1/4 2 3/8 2 7/16	19421204 19421206 19421207	UCP 212-36 UCP 212-38 UCP 212-39	2 3/4	9.370	7.323	2.598	3/4
2 1/2	19421208	UCP 213-40	3	10.315	8	2 3/4	.905
2 3/4	19421212	UCP 214-44	3 1/8	10.472	8.268	2.834	.905
2 15/16 3	19421215 19421300	UCP 215-47 UCP 215-48	3 1/4	10.787	8.543	2.913	.984
3 7/16	19421307	UCP 218-55	4	12.835	10.315	3.465	1.05

For sale as complete units, inserts and housings.



MOUNTED BALL BEARING 2-BOLT PILLOW BLOCK

SHAFT SIZE	DIMENSIONS (INCHES)					BOLT SIZE (INCHES)	INSERT #	HOUSING #	WEIGHT LBS.
	G	H	J	Bi	n				
1 5/8 1 11/16 1 3/4	13/16	.787	4.153	1.937	0.748	1/2	UC 209-26 UC 209-27 UC 209-28	P209	4.63
1 7/8 1 15/16 2	.866	.827	4.417	2.031	0.748	5/8	UC 210-30 UC 210-31 UC 210-32	P210	5.51
2 2 1/8 2 3/16	.866	.866	4.901	2.189	0.874	5/8	UC 211-32 UC 211-34 UC 211-35	P211	7.28
2 1/4 2 3/8 2 7/16	.984	.945	5.394	2.563	1.000	5/8	UC 212-36 UC 212-38 UC 212-39	P212	12.13
2 1/2	1.142	1.023	5.866	2.566	1.000	3/4	UC 213-40	P213	12.35
2 3/4	1.142	1.063	6.102	2.937	1.189	3/4	UC 214-44	P214	14.55
2 15/16 3	1.142	1.102	6.363	3.063	1.311	3/4	UC 215-47 UC 215-48	P215	16.09
3 7/16	1.181	1.30	7.795	3.78	1.563	7/8	UC 218-55	P218	32.40

BALL BEARINGS



For personal service and special requests, please call us at 800.242.4633.

CAD drawings available upon request at no additional charge.

For nomenclature see pages 226 and 227.



Post Office Box 99, Batavia, Illinois 60510, USA
630.584.4600, 800.242.4633, 630.584.1999 fax
www.molinebearing.com, sales@molinebearing.com

MOLINE BEARING CO.

TEL # **800.242.4633**

145