

ME2000 PILOTED FLANGE CARTRIDGE WITH TYPE E DIMENSIONS

SHAFT SIZE	MOLINE PART #		DIMENSIONS (INCHES)													WT. LBS
	EXP	NON-EXP	A	B	C	D	E	F	G	H	K	L	M	N		
1 1/16 40mm	29131111 29131040	29231111 29231040	3	6 1/8	2 3/16	5 1/8	7/8	7/16	1 9/16	1/2	4 1/4	2 5/8	3 5/8	2 7/8	8.5	
1 15/16 2 50mm	29131115 29131200 29131050	29231115 29231200 29231050	3	6 3/8	2 3/16	5 3/8	7/8	7/16	1 1/2	1/2	4 1/2	2 7/8	3 5/16	2 7/8	10.5	
2 3/16 55mm	29131203 29131055	29231203 29231055	3 1/4	7 1/8	2 7/16	6	1	1/2	1 25/32	1/2	5	3 1/4	4 1/4	3 1/8	14.5	
2 7/16 2 1/2 60mm 65mm	29131207 29131208 29131060 29131065	29231207 29231208 29231060 29231065	3 1/2	7 5/8	2 11/16	6 1/2	1	1/2	1 7/8	5/8	5 1/2	4	4 19/32	3 3/8	16	
2 11/16 2 3/4 2 15/16 3 70mm 75mm	29131211 29131212 29131215 29131300 29131070 29131075	29231211 29231212 29231215 29231300 29231070 29231075	3 13/16	8 3/4	2 13/16	7 1/2	1 1/4	5/8	2	3/4	6 3/8	4 3/8	5 19/64	3 5/8	22	
3 3/16 3 7/16 3 1/2 80mm 85mm 90mm	29131303 29131307 29131308 29131080 29131085 29131090	29231303 29231307 29231308 29231080 29231085 29231090	4 1/4	10 1/4	3 1/4	8 5/8	1 1/4	3/4	2 1/2	15/16	7 3/8	5 1/8	6 3/32	4 1/32	33	
3 11/16 3 15/16 4 100mm	29131311 29131315 29131400 29131100	29231311 29231315 29231400 29231100	4 3/4	10 7/8	3 9/16	9 3/8	1 1/2	3/4	2 5/8	1 1/16	8 1/8	6	6 5/8	4 19/32	45	
4 7/16 4 1/2 110mm 115mm	29131407 29131408 29131110 29131115M	29231407 29231408 29231110 29231115M	5 5/32	13 1/2	4	11 3/4	1 1/2	3/4	3 3/16	1	10 1/4	6 1/8	5 3/32	6 1/8	72	
4 15/16 5 125mm 130mm	29131415 29131500 29131125 29131130	29231415 29231500 29231125 29231130	6 1/16	14 3/4	5 3/4	12 3/4	1 3/4	7/8	3 9/16	1 1/4	11	6 7/8	5 17/32	7 7/16	99	

ME-2000™
SPHERICALS

Please Note: Before mounting, make sure there is sufficient clearance to access dismounting set screws on the back of the housing unit (yellow plastic protection plugs)

100

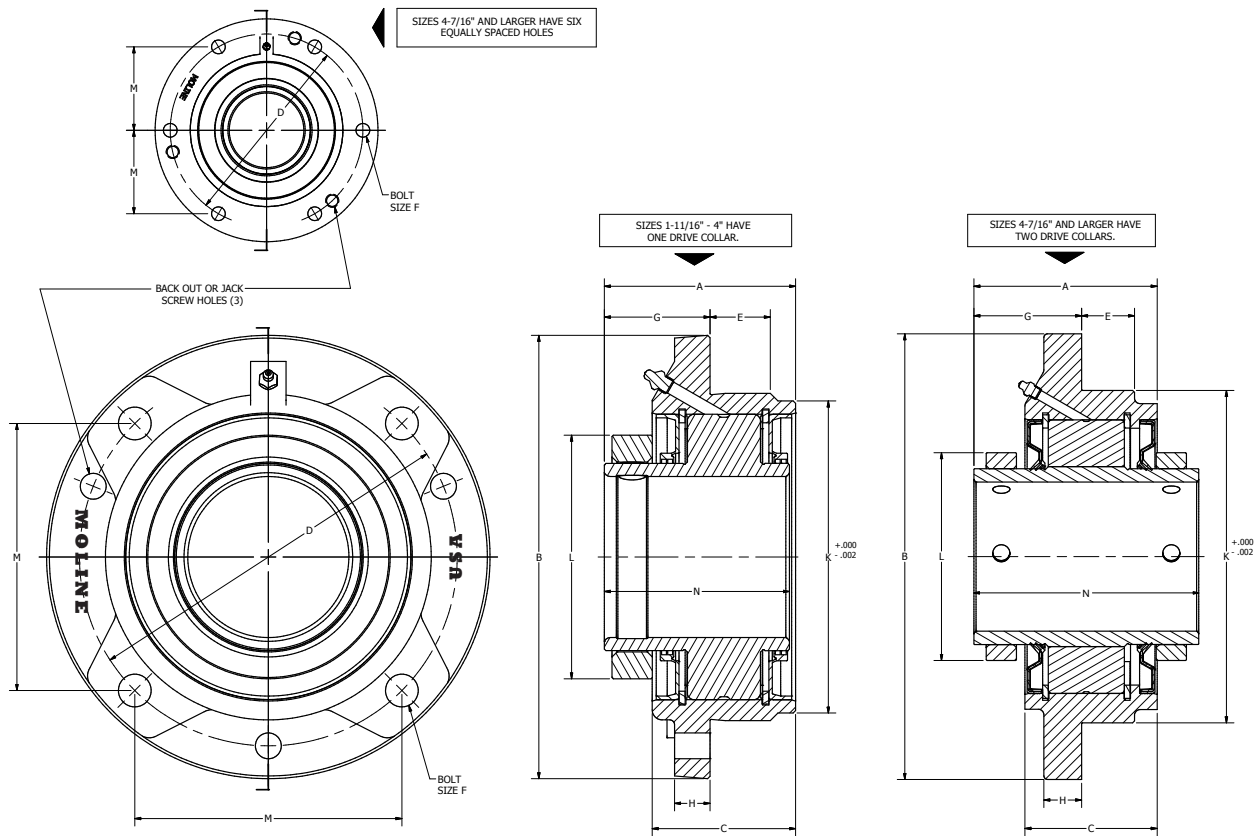
TEL # **800.242.4633**



Post Office Box 99, Batavia, Illinois 60510, USA
630.584.4600, 800.242.4633, 630.584.1999 fax
www.molinebearing.com, sales@molinebearing.com

MOLINE BEARING CO.

ME2000 PILOTED FLANGE CARTRIDGE WITH TYPE E DIMENSIONS



For personal service and special requests, please call us at 800.242.4633.

CAD drawings available upon request at no additional charge.

For nomenclature see pages 226 and 227.



Post Office Box 99, Batavia, Illinois 60510, USA
 630.584.4600, 800.242.4633, 630.584.1999 fax
 www.molinebearing.com, sales@molinebearing.com

MOLINE BEARING CO.

TEL # **800.242.4633**

101

ME-2000™
 SPHERICALS